



ST PAUL'S CHURCH
WINCHMORE HILL

A Pilgrimage to Norfolk



**Finding God
in the liminal landscapes
and medieval churches of North Norfolk**

Sunday 6 – Thursday 10 April 2025

A four-day programme for walkers and non-walkers,
visiting places of prayer and pilgrimage

About the pilgrimage

The countryside, coast and churches of North Norfolk provide the setting for a four-day pilgrimage in the week before Holy Week, which is also the first week of the Easter holidays.

We will be based at the Anglican Shrine of Our Lady of Walsingham, itself a place of pilgrimage since 1061. We will stay in the Shrine's accommodation, eating breakfast and dinner in its refectory, and joining in some of the weekly pilgrimage programme in the Shrine Church.

Each day we will visit a number of churches in and around the North Norfolk Area of Outstanding Natural Beauty (AONB). Some of the churches we will visit are among the most important and spectacular in the country, each with their own story and inheritance of faith. Fr Daniel will lead those who wish to walk on a pilgrimage of prayer around these churches. For those who do not wish to walk there will be opportunities to join the walkers at one or more of the churches by car, as well as exploring other attractions in the local area.

Cost

Cost includes accommodation, all meals, and church visits. Cost does not include transport (see below) or trips to attractions other than the churches on the itinerary.

Early bird discount

Book before the end of October for a 10% discount

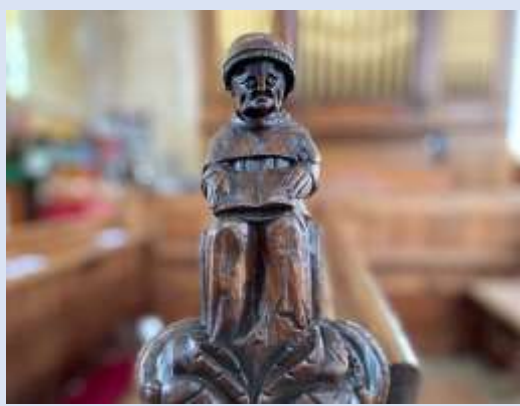
Adults £392 – Children (5-16) £209 – Under 5s free

For bookings made after 30 October

Adults £435 – Children (5-16) £232 – Under 5s free

Transport

Transport is by car, with use made of lift-sharing. Please indicate at the time of booking if you are able to offer a space in your car, or if you need a lift.



Accommodation, families, and access

Accommodation is provided within or close to the Shrine Grounds. Accommodation is offered in single, twin, double and family rooms. In order to maximise the number of pilgrims welcomed to Walsingham, it is necessary for the Shrine to ask people to share rooms with their friends wherever possible. However, it is likely that this will not be required at this time of year.

Children and families are very welcome on this pilgrimage. Early booking is recommended. There may be the option for families to sleep in sleeping bags in the Pilgrim Hall for a lower rate – email pilgrimage@spwh.org for details.

Rooms with disabled access are available. Please get in touch for details.

The walks

All three routes use identified footpaths, country lanes and sections of the Norfolk coast path. All the walks are relatively flat, except for one moderately steep (but short) climb on the Glaven Estuary Walk. There may be a small number of stiles. If you are unsure or have any questions, email Fr Daniel at pilgrimage@spwh.org

It is not necessary to commit to walks in advance of the pilgrimage, and pilgrims are welcome to walk some days and not others.

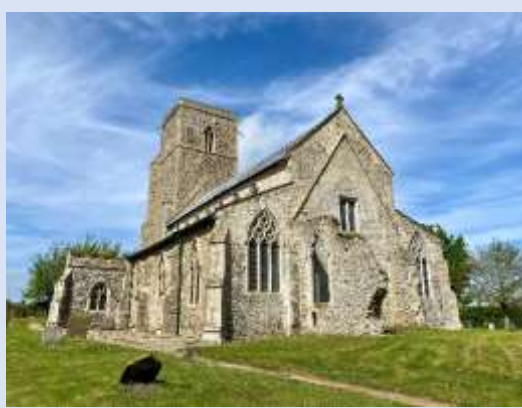
How to book

- Book at <https://tinyurl.com/yb9uwj3p> or email pilgrimage@spwh.org
- A non-refundable deposit of £50 is required at the time of booking
- Balance is due by 6 March 2025

Bank transfers can be made using the following details:

Account name	St Paul Winchmore Hill PCC
Account number	23119504
Sort code	16-00-15
Reference	Your name + 'PILGRIMAGE'

Alternatively, cheques may be made payable to *St Paul Winchmore Hill PCC*



Itinerary (provisional)

	Walkers	Non-Walkers
Sunday 6 April		
Afternoon	Travel to Walsingham	
Evening	Opening Liturgy Dinner and evening entertainment	
Monday 7 April		
Daytime	Churches of the Glaven Estuary (8 miles)	Meet for worship at Blakeney Explore villages and meet walkers at other churches OR explore local attractions (e.g. Cley Marshes)
Evening	Eucharist as Group (Shrine Church)	
Tuesday 8 April		
Daytime	Churches in the Vale of Stiffkey (11 miles)	Meet for worship at Binham Priory Explore Priory Ruins, villages and meet walkers at other churches OR explore local attractions (e.g. Hindringham Hall Gardens)
Evening	Sprinkling, Ministries of Healing and Reconciliation (Shrine Church)	
Wednesday 9 April		
Daytime	Pilgrimage Mass (Shrine Church) Walsingham Way (6 miles)	Pilgrimage Mass (Shrine Church) Explore Walsingham (e.g. Abbey Ruins, Wells and Walsingham Light Railway) Join walkers at Slipper Chapel for Holy Mile
Evening	Procession of Our Lady followed by Benediction of the Blessed Sacrament	
Thursday 10 April		
Morning	Return to Winchmore Hill Option to walk/explore Castle Acre on way home	

